

**North Carolina Economic Development Partnership (NCEDP)  
Organizational Chart – Wholesale Model**

In the Wholesale Model approach, NCEDP would perform all of the functions of the current Department of Commerce except for Employment Security and Community Assistance, which must remain in a state entity in order to receive necessary federal funding.<sup>1</sup>

To improve upon the existing model for effective sales and high quality customer service, the new model would be restructured into five primary departments: (i) Business Development, (ii) Workforce Development, (iii) Tourism, Film & Sports, (iv) Finance and (v) Policy.

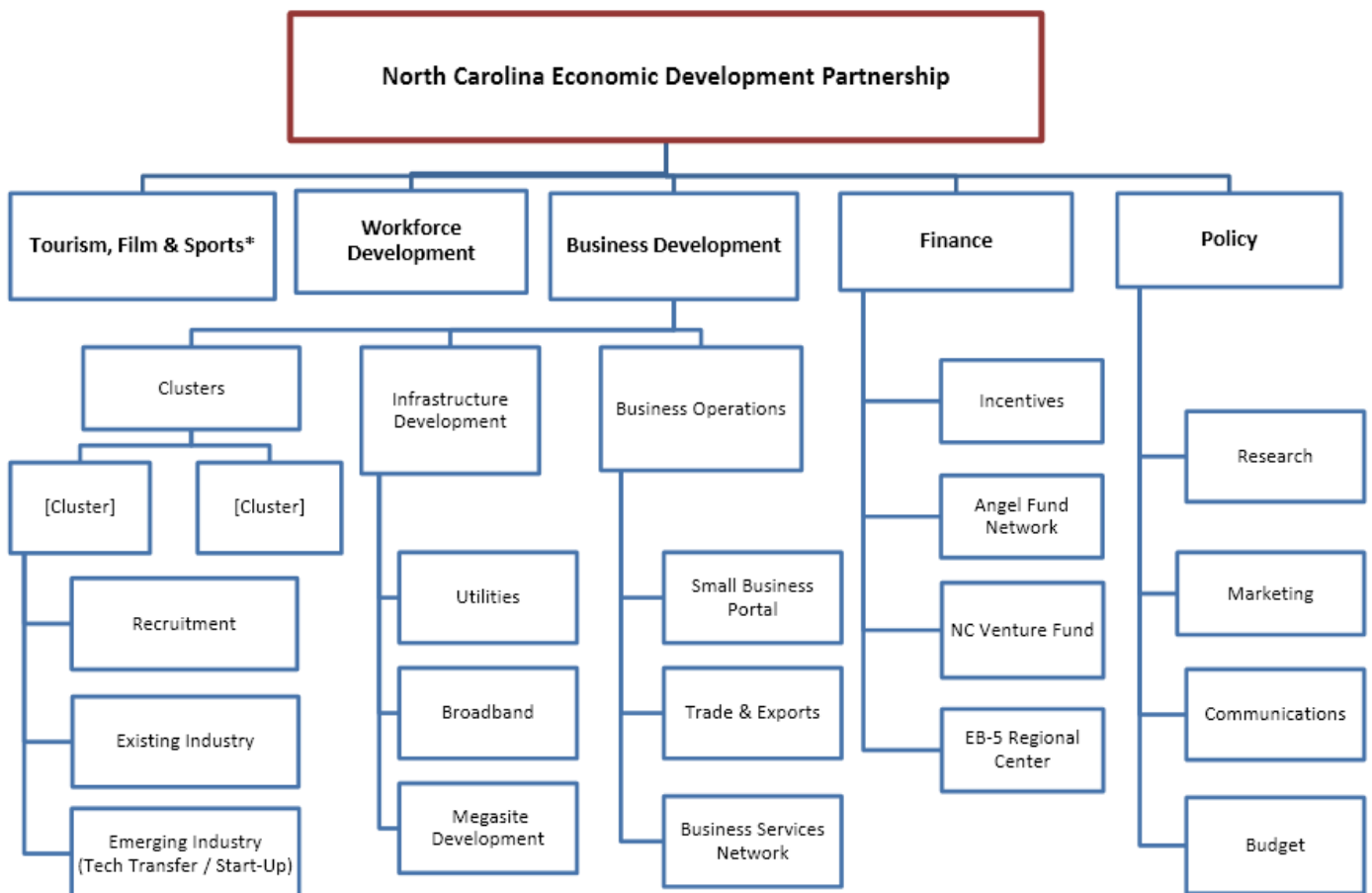
Business Development would be divided into the following categories: (i) Industry Clusters (i.e., Science & Technology (including biotechnology, agrosience, IT, nanoscience, etc.); Military & Defense; Energy; Manufacturing (traditional and advanced); Financial Services; etc.), (ii) Infrastructure Development (i.e., utilities, broadband, megasite development), and (iii) Business Operations (i.e., the small business portal, trade & exports, and a business services network coordinated with the state and local chambers).

Workforce Development would be organized based on the best-practices study currently underway.

Tourism, Film & Sports may be organized as one or more separate public-private partnerships.

Finance would be a one-stop shop to assist in financing business relocation and expansion. This division would include both an Incentives department and other new access-to-capital divisions, such as an angel fund network, a state venture fund, and a foreign direct investment center (i.e., an EB-5 regional center).

Policy would include Research (including ongoing Strategic Plan analysis), Marketing, Communications and Budget.



\*Tourism, Film & Sports may be organized as one or more separate public-private partnerships.

<sup>1</sup> Certain other functions of the Dept of Commerce that receive federal funding may also need to remain in a state entity.